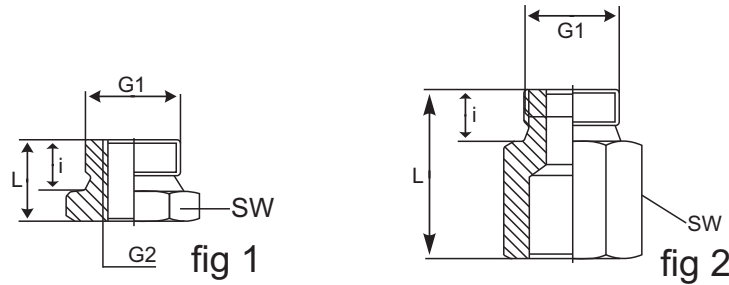
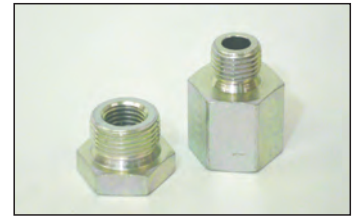


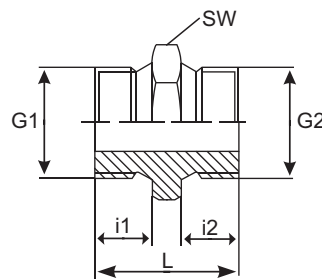
REDUCERS

| ITEMS | DESCRIPTION | FIG | G1 | G2 | L | i | SW |
|--------|-----------------|-----|--------|---------|----|----|----|
| 700512 | M22/M12 REDUCER | 1 | 22X1.5 | 12X1.5 | 19 | 12 | 27 |
| 700514 | M22/M14 REDUCER | 1 | 22X1.5 | 14X1.5 | 19 | 12 | 27 |
| 700518 | M22/M16 REDUCER | 1 | 22X1.5 | 16X1.5 | 19 | 12 | 27 |
| 700521 | M22-1/2 REDUCER | 2 | 22X1.5 | 1/2 BSP | 35 | 12 | 27 |
| 700618 | M16/M22 REDUCER | 2 | 16X1.5 | 22X1.5 | 35 | 12 | 27 |



FLAT FACE NIPPLES

| ITEMS | DESCRIPTION | G1 | G2 | L | i1 | i2 | SW |
|--------|----------------|--------|--------|----|----|----|----|
| 701102 | M22/M22 NIPPLE | 22X1.5 | 22X1.5 | 30 | 12 | 12 | 27 |
| 701112 | M26/M22 NIPPLE | 26X1.5 | 22X1.5 | 30 | 12 | 12 | 32 |
| 701119 | M26/M26 NIPPLE | 26X1.5 | 26X1.5 | 30 | 12 | 12 | 32 |



BULKHEAD BODIES

| ITEMS | DESCRIPTION | FIG | G1 | G2 | L | i1 | i2 | SW | D |
|--------|------------------|-----|---------|--------|----|----|----|----|----|
| 701202 | M22/M22 B.H BODY | 1 | 22X1.5 | 22X1.5 | 54 | 12 | 34 | 27 | |
| 701203 | 1/2-M18 B.H BODY | 2 | 1/2 BSP | 18X1.5 | 54 | 12 | 34 | 27 | 12 |
| 701204 | M22/M18 B.H BODY | 2 | 22X1.5 | 18X1.5 | 54 | 12 | 34 | 27 | 12 |
| 701205 | M16/M18 B.H BODY | 2 | 16X1.5 | 18X1.5 | 54 | 12 | 34 | 22 | 12 |
| 701210 | M16/M22 B.H BODY | 1 | 16X1.5 | 22X1.5 | 54 | 12 | 34 | 27 | |

