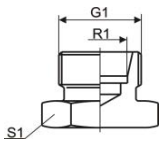


**ROV Verschlusschraube Typ 15-360/..** / Coupling plugs type 15-360/..  
Für 24°-Konus, Bohrungsform W, DIN 3861 / for inner cone 24°, port form W, DIN 3861

Art. Nr.	Bezeichnung Description	R1	G1	S1
412.310	15-360/L 06	L06	M12x1,5	12
412.311	15-360/L 08	L08	M14x1,5	14
412.312	15-360/L 10	L10	M16x1,5	17
412.313	15-360/L 12	L12	M18x1,5	19
412.314	15-360/L 15	L15	M22x1,5	24
412.315	15-360/L 18	L18	M26x1,5	27
412.316	15-360/L 22	L22	M30x2	32
412.317	15-360/L 28	L28	M36x2	41
412.318	15-360/L 35	L35	M45x2	46
412.319	15-360/L 42	L42	M52x2	55
412.320	15-360/S 06	S06	M14x1,5	14
412.321	15-360/S 08	S08	M16x1,5	17
412.322	15-360/S 10	S10	M18x1,5	19
412.323	15-360/S 12	S12	M20x1,5	22
412.324	15-360/S 14	S14	M22x1,5	24
412.325	15-360/S 16	S16	M24x1,5	27
412.326	15-360/S 20	S20	M30x2	32
412.327	15-360/S 25	S25	M36x2	41
412.328	15-360/S 30	S30	M42x2	46
412.329	15-360/S 38	S38	M52x2	55



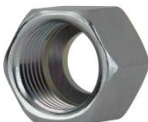
**VKA Verschlussbutzen Typ 15-370/..** / Coupling plugs type 15-370/..  
Für 24°-Konus, Bohrungsform W, DIN 3861, O-Ring / for inner cone 24°, port form W, DIN 3861, o-ring

Art. Nr.	Bezeichnung Description
417.710	15-370/L 06 / S06
417.711	15-370/L 08 / S08
417.712	15-370/L 10 / S10
417.713	15-370/L 12 / S12
417.714	15-370/L 15
417.715	15-370/L 18
417.716	15-370/L 22
417.717	15-370/L 28
417.718	15-370/L 35
417.719	15-370/L 42
417.724	15-370/S 14
417.725	15-370/S 16
417.726	15-370/S 20
417.727	15-370/S 25
417.728	15-370/S 30
417.729	15-370/S 38



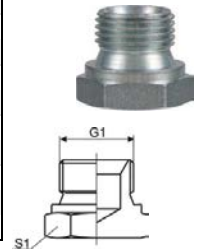
**Überwurfmutter Typ 15-30/...** / Screw cap type 15-30/...

Art. Nr.	Bezeichnung Description	G1	S1
415.010	15-30/L 06	M12x1,5	14
415.011	15-30/L 08	M14x1,5	17
415.012	15-30/L 10	M16x1,5	19
415.013	15-30/L 12	M18x1,5	22
415.014	15-30/L 15	M22x1,5	27
415.015	15-30/L 18	M26x1,5	32
415.016	15-30/L 22	M30x2	36
415.017	15-30/L 28	M36x2	41
415.018	15-30/L 35	M45x2	50
415.019	15-30/L 42	M52x2	60
415.020	15-30/S 06	M14x1,5	17
415.021	15-30/S 08	M16x1,5	19
415.022	15-30/S 10	M18x1,5	22
415.023	15-30/S 12	M20x1,5	24
415.024	15-30/S 14	M22x1,5	27
415.025	15-30/S 16	M24x1,5	30
415.026	15-30/S 20	M30x2	36
415.027	15-30/S 25	M36x2	46
415.028	15-30/S 30	M42x2	50
415.029	15-30/S 38	M52x2	60



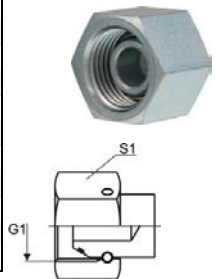
**BSP Verschlusschrauben Typ 15-360/G.. / BSP drain plugs type 15-360/G..**

Art. Nr.	Bezeichnung Description	G1	S1
409.070	15-360/G 1/8"	G1/8"	14
409.071	15-360/G 1/4"	G1/4"	19
409.072	15-360/G 3/8"	G3/8"	22
409.073	15-360/G 1/2"	G1/2"	27
409.074	15-360/G 5/8"	G5/8"	30
409.075	15-360/G 3/4"	G3/4"	32
409.076	15-360/G 1"	G1"	41
409.077	15-360/G 1.1/4"	G1.1/4"	50
409.078	15-360/G 1.1/2"	G1.1/2"	55
409.079	15-360/G 2"	G2"	70



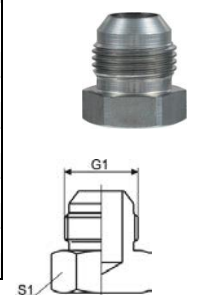
**BSP Verschlussmutter Typ 15-37/G.. / BSP drain caps type 15-37/G..**

Art. Nr.	Bezeichnung Description	G1	S1
409.080	15-37/G 1/8"	G1/8"	14
409.081	15-37/G 1/4"	G1/4"	19
409.082	15-37/G 3/8"	G3/8"	22
409.083	15-37/G 1/2"	G1/2"	27
409.084	15-37/G 5/8"	G5/8"	30
409.085	15-37/G 3/4"	G3/4"	32
409.086	15-37/G 1"	G1"	41
409.087	15-37/G 1.1/4"	G1.1/4"	50
409.088	15-37/G 1.1/2"	G1.1/2"	55
409.089	15-37/G 2"	G2"	70



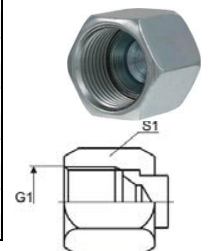
**JIC-Verschlussstopfen Typ 15-360/J.. / JIC drain plugs type 15-360/J..**

Art. Nr.	Bezeichnung Description	G1	S1
407.700	15-360/J 7/16"	7/16"-20	12
407.701	15-360/J 1/2"	1/2"-20	14
407.702	15-360/J 9/16"	9/16"-18	17
407.703	15-360/J 3/4"	3/4"-16	22
407.704	15-360/J 7/8"	7/8"-14	24
407.705	15-360/J 1.1/16"	1.1/16"-12	30
407.706	15-360/J 1.5/16"	1.5/16"-12	36
407.707	15-360/J 1.5/8"	1.5/8"-12	46
407.708	15-360/J 1.7/8"	1.7/8"-12	50

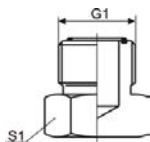


**JIC-Verschlussmutter Typ 15-37/J.. / JIC drain caps type 15-37/J..**

Art. Nr.	Bezeichnung Description	G1	S1
407.690	15-37/J 7/16"	7/16"-20	14
407.691	15-37/J 1/2"	1/2"-20	17
407.692	15-37/J 9/16"	9/16"-18	19
407.693	15-37/J 3/4"	3/4"-16	22
407.694	15-37/J 7/8"	7/8"-14	27
407.695	15-37/J 1.1/16"	1.1/16"-12	32
407.696	15-37/J 1.5/16"	1.5/16"-12	41
407.697	15-37/J 1.5/8"	1.5/8"-12	50
407.698	15-37/J 1.7/8"	1.7/8"-12	60

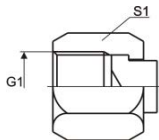


R1 Rohrgröße / Pipe size  
G1 Gewinde / Thread  
S1 Schlüsselweite / Hexagon



**ORFS Verschlusschraube Typ 15-34/O.. / ORFS drain plugs type 15-34/O..**

Art. Nr.	Bezeichnung Description	G1	S1
405.400	15-34/O 9/16"	9/16"-18	17
405.401	15-34/O 11/16"	11/16"-16	19
405.402	15-34/O 13/16"	13/16"-16	22
405.403	15-34/O 1"	1"-14	27
405.404	15-34/O 1.3/16"	1.3/16"-12	32
405.405	15-34/O 1.7/16"	1.7/16"-12	41
405.406	15-34/O 1.11/16"	1.11/16"-12	46
405.407	15-34/O 2"	2"-12	55



**ORFS Verschlussmutter Typ 15-37/O.. / ORFS drain caps type 15-37/O..**

Art. Nr.	Bezeichnung Description	G1	S1
405.390	15-37/O 9/16"	9/16"-18	22
405.391	15-37/O 11/16"	11/16"-16	27
405.392	15-37/O 13/16"	13/16"-16	30
405.393	15-37/O 1"	1"-14	36
405.394	15-37/O 1.3/16"	1.3/16"-12	41
405.395	15-37/O 1.7/16"	1.7/16"-12	46
405.396	15-37/O 1.11/16"	1.11/16"-12	50
405.397	15-37/O 2"	2"-12	60



Sortiment Verschlussstopfen / -Butzen metrisch - Assortment of sealing plugs metric					
Art.-Nr. 100.931		78 tlg. Inkl. Metallkasten			
Menge	Art.-Nr. Art.-N°	Bezeichnung Description	Menge	Art.-Nr. Art.-N°	Bezeichnung Description
5	412.310	15-360/L06	5	417.710	15-370/ L/S06
5	412.311	15-360/L08	5	417.711	15-370/ L/S08
5	412.312	15-360/L10	5	417.712	15-370/ L/S10
5	412.313	15-360/L12	5	417.713	15-370/ L/S12
5	412.314	15-360/L15	5	417.714	15-370/L15
3	412.320	15-360/S06	5	417.724	15-370/S14
3	412.321	15-360/S08	5	417.725	15-370/S16
3	412.322	15-360/S10			
3	412.323	15-360/S12			
3	412.324	15-360/S14			
3	412.325	15-360/S16			
1	100.901	HKK 18			



Sortiment BSP-Verschlussstopfen / -Muttern- Assortment of BSP closure plugs / nuts					
Art.-Nr. 100.985		50 tlg. Inkl. Metallkasten			
Menge	Art.-Nr. Art.-N°	Bezeichnung Description	Menge	Art.-Nr. Art.-N°	Bezeichnung Description
5	409.070	15-360/G1/8"	5	409.080	15-37/G1/8"
5	409.071	15-360/G1/4"	5	409.081	15-37/G1/4"
5	409.072	15-360/G3/8"	5	409.082	15-37/G3/8"
5	409.073	15-360/G1/2"	5	409.083	15-37/G1/2"
5	409.075	15-360/G3/4"	5	409.085	15-37/G3/4"
1	100.902	HKK 12			



Sortiment JIC-Verschlussstopfen / -Muttern - Sortiment JIC-Verschlussstopfen / -Muttern					
Art.-Nr. 100.986		60 tlg. Inkl. Metallkasten			
Menge	Art.-Nr. Art.-N°	Bezeichnung Description	Menge	Art.-Nr. Art.-N°	Bezeichnung Description
5	407.700	15-360/J7/16"	5	407.690	15-37/J7/16"
5	407.701	15-360/J1/2"	5	407.691	15-37/J1/2"
5	407.702	15-360/J9/16"	5	407.692	15-37/J9/16"
5	407.703	15-360/J3/4"	5	407.693	15-37/J3/4"
5	407.704	15-360/J7/8"	5	407.694	15-37/J7/8"
5	407.705	15-360/J1.1/16"	5	407.695	15-37/J1.1/16"
1	100.902	HKK 12			



Sortiment ORFS-Verschlussstopfen / -Muttern- ORFS closure plugs / nuts					
Art.-Nr. 100.987		48 tlg. Inkl. Metallkasten			
Menge	Art.-Nr. Art.-N°	Bezeichnung Description	Menge	Art.-Nr. Art.-N°	Bezeichnung Description
5	405.400	15-34/O9/16"	5	405.390	15-37/O9/16"
5	405.401	15-34/O11/16"	5	405.391	15-37/O11/16"
5	405.402	15-34/O13/16"	5	405.392	15-37/O13/16"
5	405.403	15-34/O1"	5	405.393	15-37/O1"
4	405.404	15-34/O1.3/16"	4	405.394	15-37/O1.3/16"
1	100.902	HKK 12			



G1 Gewinde / Thread  
S1 Schlüsselweite / Hexagon

**Gummi- Verschlussstopfen Typ NR-VS- Rubber stopper type NR-VS**  
nach DIN 12871 – Material: Naturkautschuk (NR), grau. Härtegrad: Shore 40

Art.Nr Art.N°	Bezeichnung Description	D1 (mm)	D2 (mm)	H1 (mm)
124.480	NR-VS 3,5 - 6,5	3,5	6,5	15
124.481	NR-VS 5,0 - 9,0	5,0	9,0	20
124.482	NR-VS 8,0 - 12,0	8,0	12,0	20
124.483	NR-VS 10,5 - 14,5	10,5	14,5	20
124.484	NR-VS 14,0 - 18,0	14,0	18,0	20
124.485	NR-VS 17,0 - 22,0	17,0	22,0	25
124.486	NR-VS 21,0 - 27,0	21,0	27,0	30
124.487	NR-VS 26,0 - 32,0	26,0	32,0	30
124.488	NR-VS 31,0 - 38,0	31,0	38,0	35
124.489	NR-VS 36,0 - 44,0	36,0	44,0	40
124.495	NR-VS 41,0 - 49,0	41,0	49,0	40
124.496	NR-VS 47,0 - 55,0	47,0	55,0	40
124.497	NR-VS 50,5 - 59,5	50,5	59,5	45
124.498	NR-VS 56,0 - 65,0	56,0	65,0	45
124.499	NR-VS 60,0 - 70,0	60,0	70,0	50
124.500	NR-VS 64,5 - 75,5	64,5	75,5	55
124.501	NR-VS 71,0 - 83,0	71,0	83,0	60
124.502	NR-VS 79,0 - 92,0	79,0	92,0	65
124.503	NR-VS 87,0 - 100,0	87,0	100,0	65
124.504	NR-VS 94,0 - 107,0	94,0	107,0	65



**Sortiment NR-VS 1 - Assortment NR-VS 1**  
Art.-Nr. 124.490 80 tlg. Inkl. Metallkasten

Menge	Art.-Nr. Art.-N°	Bezeichnung Description	D1 (mm)	D2 (mm)	H1 (mm)
10	124.480	NR-VS 3,5 - 6,5	3,5	6,5	15
10	124.481	NR-VS 5,0 - 9,0	5,0	9,0	20
10	124.482	NR-VS 8,0 - 12,0	8,0	12,0	20
10	124.483	NR-VS 10,5 - 14,5	10,5	14,5	20
10	124.484	NR-VS 14,0 - 18,0	14,0	18,0	20
10	124.485	NR-VS 17,0 - 22,0	17,0	22,0	25
5	124.486	NR-VS 21,0 - 27,0	21,0	27,0	30
5	124.487	NR-VS 26,0 - 32,0	26,0	32,0	30
5	124.488	NR-VS 31,0 - 38,0	31,0	38,0	35
4	124.489	NR-VS 36,0 - 44,0	36,0	44,0	40
1	100.902	HKK 12			



**Sortiment NR-VS 2 - Assortment NR-VS 2**  
Art.-Nr. 124.491 121 tlg. Inkl. Metallkasten

Menge	Art.-Nr. Art.-N°	Bezeichnung Description	D1 (mm)	D2 (mm)	H1 (mm)
20	124.480	NR-VS 3,5 - 6,5	3,5	6,5	15
20	124.481	NR-VS 5,0 - 9,0	5,0	9,0	20
20	124.482	NR-VS 8,0 - 12,0	8,0	12,0	20
20	124.483	NR-VS 10,5 - 14,5	10,5	14,5	20
10	124.484	NR-VS 14,0 - 18,0	14,0	18,0	20
10	124.485	NR-VS 17,0 - 22,0	17,0	22,0	25
10	124.486	NR-VS 21,0 - 27,0	21,0	27,0	30
10	124.487	NR-VS 26,0 - 32,0	26,0	32,0	30
1	100.902	HKK 12			



**Verschlussstopfen Typ UVS - Closing plug type UVS**

Art.Nr Art.N°	Bezeichnung Description	D1 (mm)	D2 (mm)	H1 (mm)
124.505	UVS 1-10	1	10	60
124.506	UVS 4-23	4	23	115
124.507	UVS 12-43	12	43	165
124.509	UVS Set	2x UVS 1-10 + 2x UVS 4-23 + 2x UVS 12-43		



<b>Kunststoff Gewindestopfen Typ PE-GS / Plastic Threaded plug type PE-GS</b>		
Außengewinde-Stopfen. Material: Kunststoff (PE)		
Art.Nr Art.N°	Bezeichnung Description	G1
141.050	PE-GS AG 1/8"	AG G1/8"
141.051	PE-GS AG 1/4"	AG G1/4"
141.052	PE-GS AG 3/8"	AG G3/8"
141.053	PE-GS AG 1/2"	AG G1/2"
141.054	PE-GS AG 3/4"	AG G3/4"
141.055	PE-GS AG 1"	AG G1"
141.065	PE-GS AG 10x1	AG M10x1
141.066	PE-GS AG 12x1,5	AG M12x1,5
141.067	PE-GS AG 14x1,5	AG M14x1,5
141.068	PE-GS AG 16x1,5	AG M16x1,5
141.069	PE-GS AG 18x1,5	AG M18x1,5
141.070	PE-GS AG 20x1,5	AG M20x1,5
141.071	PE-GS AG 22x1,5	AG M22x1,5
141.072	PE-GS AG 24x1,5	AG M24x1,5
141.073	PE-GS AG 26x1,5	AG M26x1,5
141.078	PE-GS AG 30x2	AG M30x2
141.080	PE-GS AG 36x2	AG M36x2
141.081	PE-GS AG 42x2	AG M42x2
141.082	PE-GS AG 45x2	AG M45x2
141.083	PE-GS AG 52x2	AG M52x2



<b>Kunststoff Gewindekappen Typ PE-GK / Plastic Thread caps type PE-GK</b>		
Innengewinde-Kappen. Material: Kunststoff (PE)		
Art.Nr Art.N°	Bezeichnung Description	G1
141.100	PE-GK IG 1/8"	IG G1/8"
141.101	PE-GK IG 1/4"	IG G1/4"
141.102	PE-GK IG 3/8"	IG G3/8"
141.103	PE-GK IG 1/2"	IG G1/2"
141.105	PE-GK IG 3/4"	IG G3/4"
141.106	PE-GK IG 1"	IG G1"
141.116	PE-GK IG 10x1,0	IG M10x1
141.118	PE-GK IG 12x1,5	IG M12x1,5
141.119	PE-GK IG 14x1,5	IG M14x1,5
141.120	PE-GK IG 16x1,5	IG M16x1,5
141.121	PE-GK IG 18x1,5	IG M18x1,5
141.122	PE-GK IG 20x1,5	IG M20x1,5
141.123	PE-GK IG 22x1,5	IG M22x1,5
141.124	PE-GK IG 24x1,5	IG M24x1,5
141.125	PE-GK IG 26x1,5	IG M26x1,5
141.128	PE-GK IG 30x2,0	IG M30x2
141.130	PE-GK IG 36x2,0	IG M36x2
141.131	PE-GK IG 42x2,0	IG M42x2
141.133	PE-GK IG 45x2,0	IG M45x2
141.134	PE-GK IG 52x2,0	IG M52x2



Sortiment Stopfen + Kappen metrisch Art.-Nr. 100.970  
 Sortiment Stopfen + Kappen zöllig Art.-Nr. 100.972  
 Sortiment Stopfen + Kappen metrisch/zöllig Art.-Nr. 100.973



<b>Kunststoff Schutzkappen Typ PE-SK / Plastic protection caps type PE-SK</b>		
Material: Kunststoff (PE)		
Art.Nr Art.N°	Bezeichnung Description	D1 (mm)
141.000	PE-SK ID 4	ID 4
141.002	PE-SK ID 6	ID 6
141.005	PE-SK ID 8	ID 8
141.007	PE-SK ID 10,2	ID 10,2
141.009	PE-SK ID 12	ID 12
141.014	PE-SK ID 15	ID 15
141.017	PE-SK ID 18	ID 18
141.019	PE-SK ID 20	ID 20
141.021	PE-SK ID 22	ID 22
141.025	PE-SK ID 25,4	ID 25,4
141.031	PE-SK ID 30	ID 30



**D1 (mm)** Durchmesser / Diameter  
**D2 (mm)** Durchmesser / Diameter  
**G1** Gewinde / Thread  
**H1 (mm)** Höhe / Height